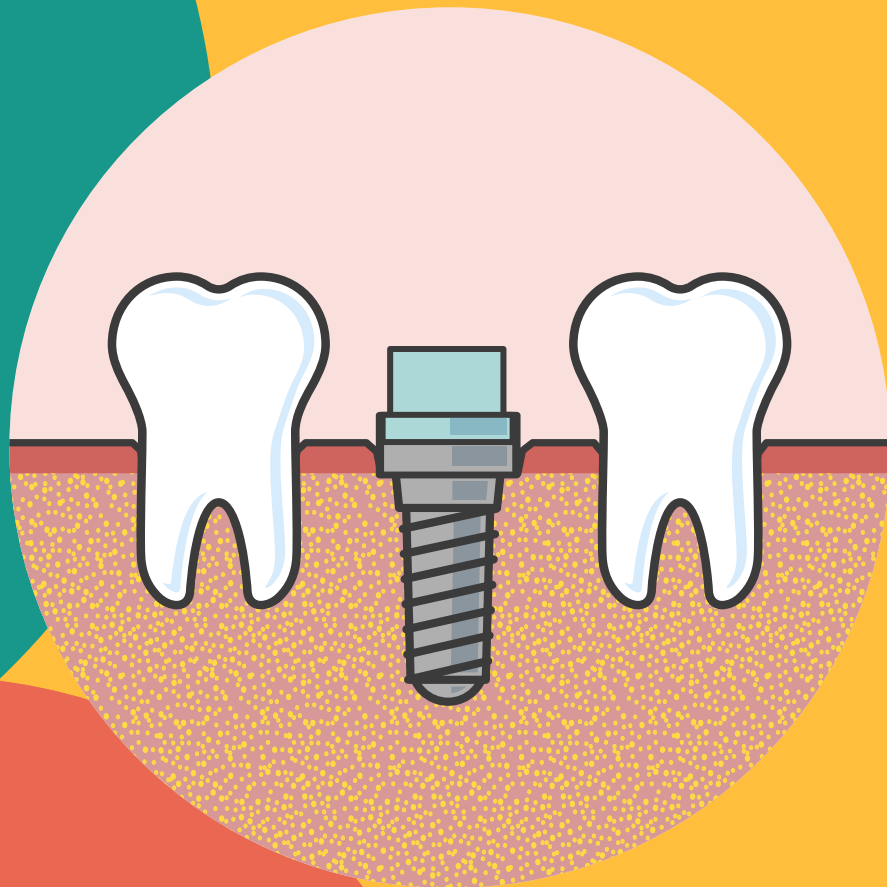


DID YOU KNOW?

Dental implants are devices made of titanium, which are used to replace the root of the tooth and give support to a prosthesis. Thus contributing to improved physical appearance and ability to chew.



DISCOVER THE MAIN ADVANTAGES OF TREATMENT WITH IMPLANTS:

- Natural-looking
- Durability
- Preservation of the bone structure
- Preservation of the palate
- Maintain quality of chewing

Consult your dental professional to determine if Nuvo™ implants are right for you.

Certain medical conditions associated with oral surgery may present risks for patients, including uncontrolled diabetes, bone disease, and use of steroids, anticoagulants, or treatments that lower your ability to fight infection. Please consult with your doctor to see if dental implants are right for you.

© Nuvo® 2020. All rights reserved. Nuvo® and/or other trademarks and logos from Nuvo® that are mentioned herein are the trademarks or registered trademarks of Straumann Holding AG and/or its affiliates. © All other trademarks are the property of their respective owners. All rights reserved.

ifu.nuvoimplants.com/en www.nuvoimplants.com

nuvo™

Simplicity made accessible.

DID YOU KNOW?

Dental implants can improve physical appearance and ability to chew. They are suitable for patients who have lost one or multiple teeth.

Consult your dental professional to determine if Nuvo™ implants are right for you.



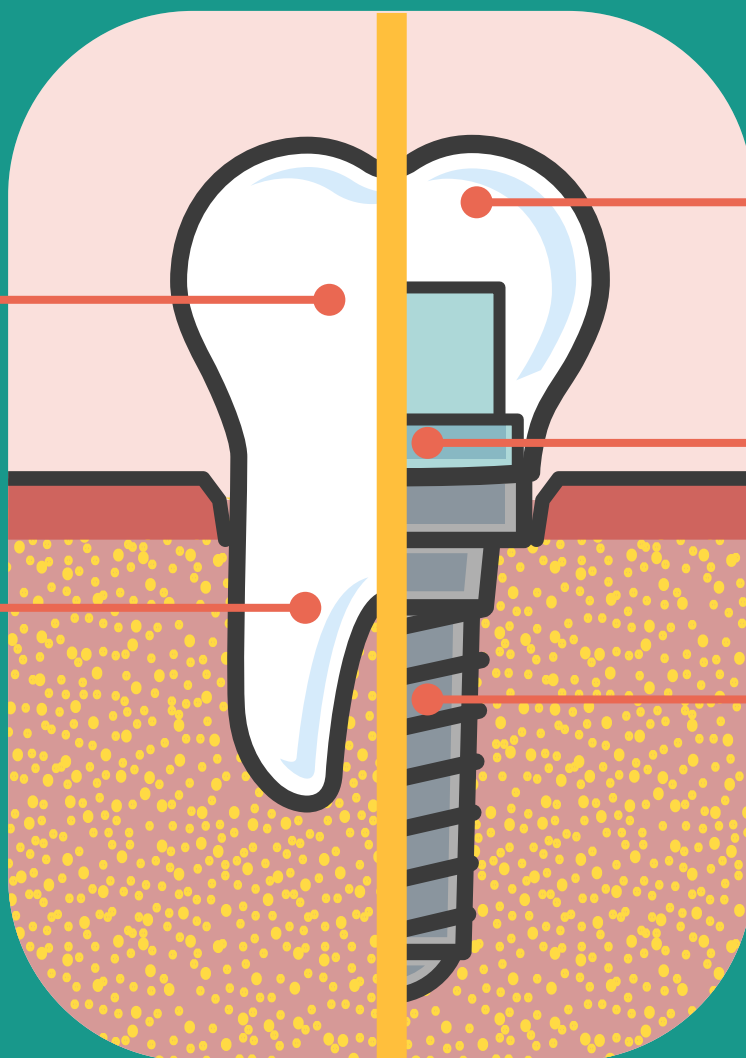
Natural dental crown

Root of natural tooth

Prosthetic crown

Prosthetic (intermediate) component

Dental implant



Certain medical conditions associated with oral surgery may present risks for patients, including uncontrolled diabetes, bone disease, and use of steroids, anticoagulants, or treatments that lower your ability to fight infection. Please consult with your doctor to see if dental implants are right for you.

© Nuvo® 2020. All rights reserved. Nuvo® and/or other trademarks and logos from Nuvo® that are mentioned herein are the trademarks or registered trademarks of Straumann Holding AG and/or its affiliates.

® All other trademarks are the property of their respective owners. All rights reserved.

ifu.nuvoimplants.com/en www.nuvoimplants.com

nuvo™

Simplicity made accessible.

DID YOU KNOW?

There are many treatments available to restore and replace teeth, depending on your clinical circumstances. Consult your dental professional to determine if Nuvo™ implants are right for you.

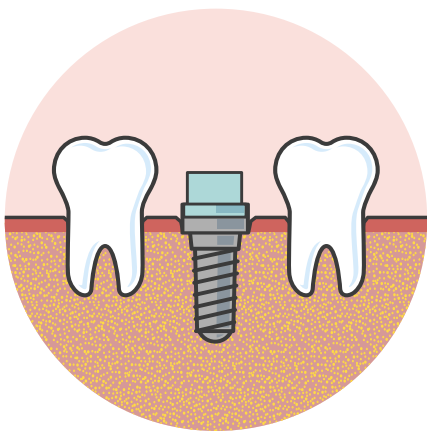
TREATMENT WITH IMPLANT

- Conservation of the adjacent original teeth;
- Preservation of the bone structure and palate;
- Natural-looking;
- Maintaining quality of chewing.

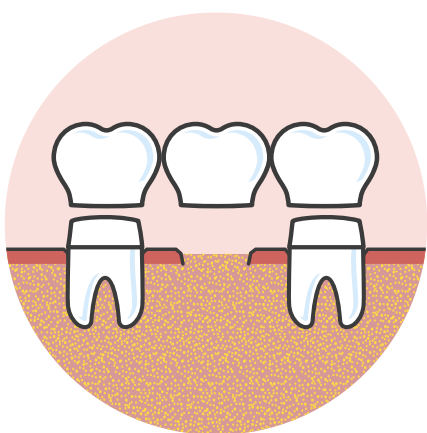
CONVENTIONAL TREATMENT

- Wear of the adjacent teeth supporting the bridge;
- Possible changes to the palate;
- Discomfort caused by movement of prosthesis;
- Bone resorption in the edentulous area.

I LOST A TOOTH

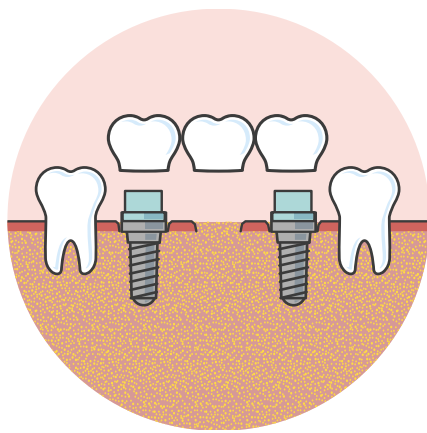


Placing an implant

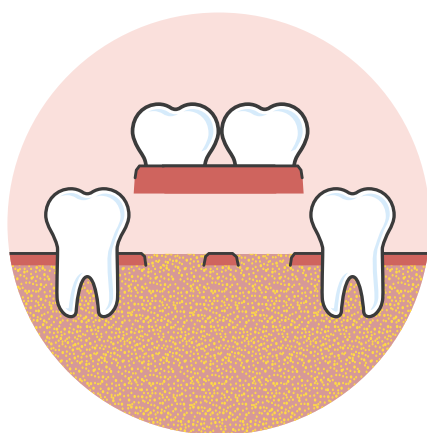


Fixed Bridge

I LOST SEVERAL TEETH

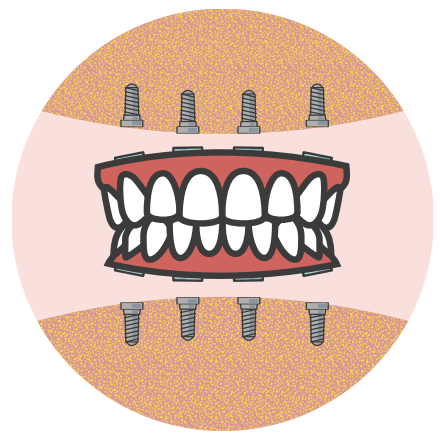


Placement of implants with fixed prosthesis



Treatment with removable partial denture (RPD)

I LOST ALL MY TEETH



Full protocol with implants



Treatment with full prosthesis

Certain medical conditions associated with oral surgery may present risks for patients, including uncontrolled diabetes, bone disease, and use of steroids, anticoagulants, or treatments that lower your ability to fight infection. Please consult with your doctor to see if dental implants are right for you.

© Nuvo® 2020. All rights reserved. Nuvo® and/or other trademarks and logos from Nuvo® that are mentioned herein are the trademarks or registered trademarks of Straumann Holding AG and/or its affiliates.

© All other trademarks are the property of their respective owners. All rights reserved.



Simplicity made accessible.